

PROGRAM : 5 FLATS
 SITE : ERF 46 AND ERF 47
 PROPOSED : 2862 SQM

- LEGENDED
- SITE BOUNDARY
 - EXISTING BUILDING
 - ZONING CONSTRAINT
 - PROPOSED BUILDING
 - CIRCULATION
 - PARKING
 - LANDSCAPE TERRACE

NOTICE
NOT FOR CONSTRUCTION

NOTE: This document and its contents are the copyright of the designer. Any party making the document does so in reliance on the design. Any party who copies, reproduces, or otherwise uses the design or any part thereof without the written consent of the designer shall be liable for any and all damages or costs incurred on this account. All information on these drawings are for aesthetic content only.

- CLIENT
- D'AREALTY**
LIFESTYLE ARTISTRY
- PROJECT MANAGER
- MDA**
MITCHELL DU PLESSIS ASSOCIATES
- PLANNING CONSULTANT
- TOMMY BRÜMMER**
TOWN PLANNERS
- GEOTECHNICAL ENGINEERS
- M/VAN WIERINGEN & ASSOCIATES**
- ARCHITECT OF RECORD
- Fabian Architects**
Make Architects & Interior Studio
- PROJECT DESIGN ARCHITECT

WATG

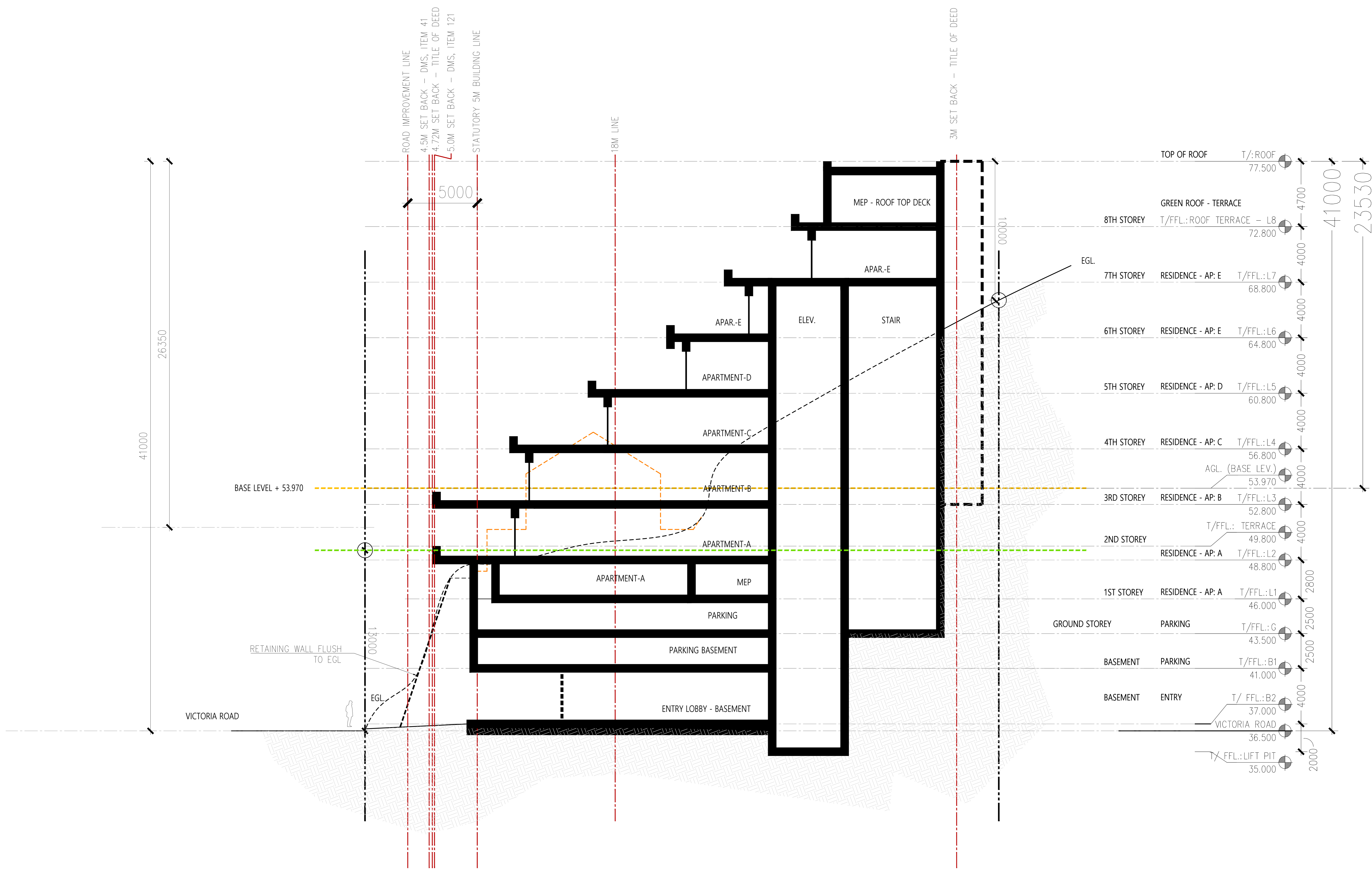
strategy planning architecture landscape interiors
 london | +44 20 7906 6600 watg.com

AZALEA
APARTMENTS

ERVEN 46 & 47
 (TO BE CONSOLIDATED)
 CLIFTON, CAPE TOWN

sheet title
 project no. 167122 03-08-2017
 checked by: NC
 drawn by: EG
 scale 1/50 @ A0
 revision **B**

ASK-0051-14
 sheet no.



01 BLDG. SECTION - A
 1 : 50

FOR REFERENCE

NOTICE
NOT FOR CONSTRUCTION
 NOTICE: This document and its contents are the copyright of the design. Any party making the document does so in reliance and agrees that subsequent content may not be published in whole or in part or distributed to third parties without the express prior written consent of WATG. All drawings are for reference only. All dimensions are in millimeters unless otherwise stated.

CLIENT

 D'AREALTY
 LIFESTYLE ARTISTRY

PROJECT MANAGER



 MDA
 MITCHELL DU PLESSIS ASSOCIATES

PLANNING CONSULTANT

 TOMMY BRÜMMER
 TOWN PLANNERS

GEOTECHNICAL ENGINEERS

 M/VAN WIERINGEN & ASSOCIATES

ARCHITECT OF RECORD

 Fabian Architects

 Make Architects & Interior Studio

PROJECT DESIGN ARCHITECT

WATG

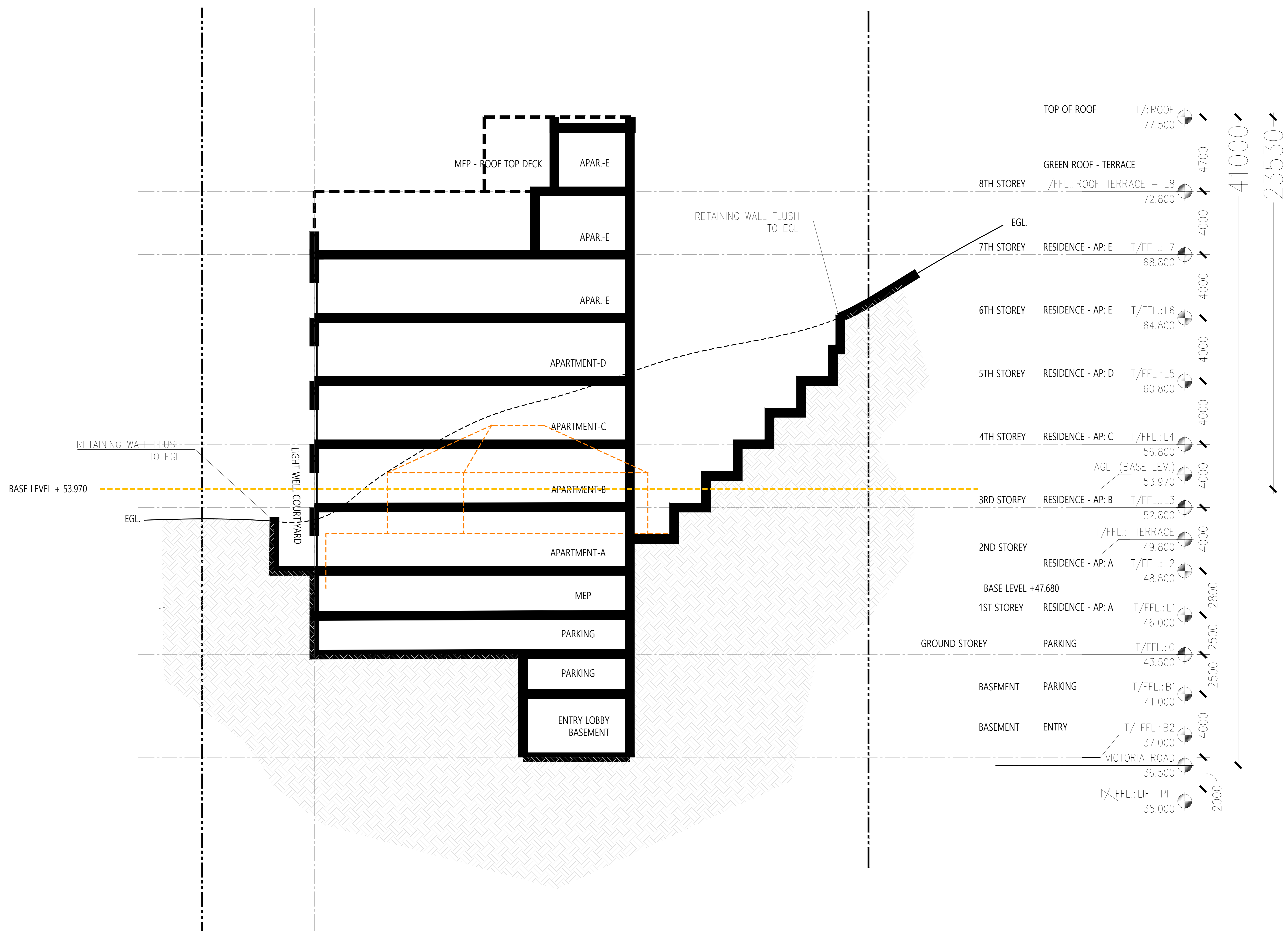
strategy planning architecture landscape interiors
 london | +44 20 7906 6600 watg.com

AZALEA
 APARTMENTS

ERVEN 46 & 47
 (TO BE CONSOLIDATED)
 CLIFTON, CAPE TOWN

sheet title
 project no. 167122 03-08-2017
 checked by: NC
 drawn by: EG
 scale 1/50 @ A0
 revision **B**

ASK-0051-15
 sheet no.



FOR REFERENCE