



Figure 1 Site with transformed vegetation in the foreground and derelict cottages in the background, as seen from the south-western corner of the site



Figure 10 Ou Wapad



Figure 2 Area Across the Road from the Site

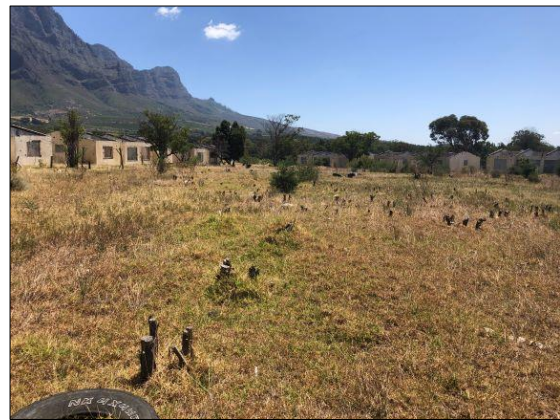


Figure 11 Site with transformed vegetation in the foreground and derelict cottages in the background, as seen from the eastern edge of the site



Figure 3 Derelict cottages on site



Figure 12 Site with transformed vegetation in the foreground and derelict cottages along the north-eastern section of the site in the background



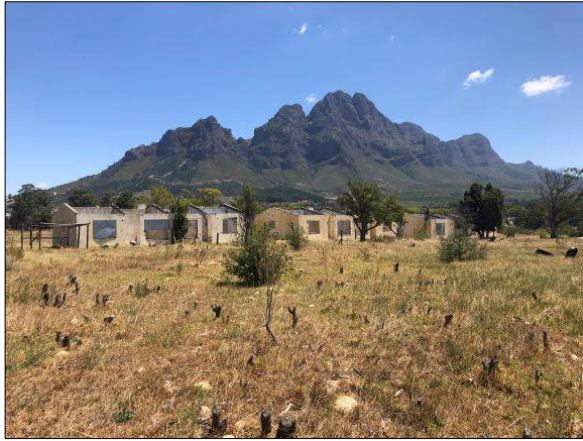


Figure 4 South-western row of derelict cottages on the site



Figure 13 Inside one of the derelict cottages, note no roof and no internal facilities/furnishings (2)



Figure 5 Inside one of the derelict cottages, note no roof and no internal facilities/furnishings (1)



Figure 14 Inside one of the derelict cottages, note no roof and no internal facilities/furnishings (3)



Figure 6 Closer view of derelict cottages, from the outside (1)



Figure 15 Closer view of derelict cottages, from the outside (2)





Figure 7 Transformed "central courtyard" area with derelict cottages in the background



Figure 16 Berm adjacent to the stream



Figure 8 Dried Perennial Stream and banks (1)



Figure 17 Dried Perennial Stream and banks (2)



Figure 9 Transformed "central courtyard" area with derelict cottages in the background (2)

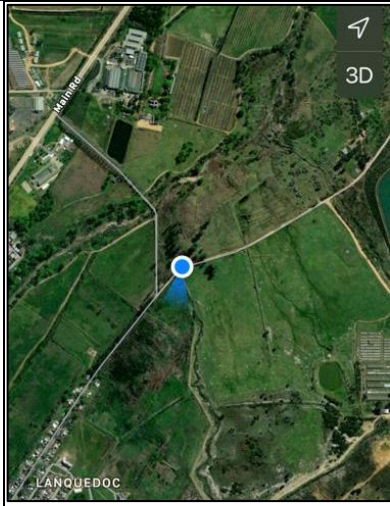


Figure 18 Transformed "central courtyard" area with derelict cottages in the background (3)





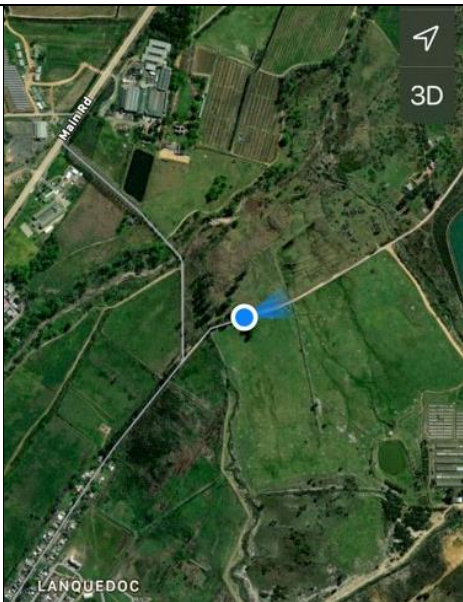
## Inside Boschendal Estate



*Figure 1 Orientation for Figure 2*



*Figure 2 Road and Access Gate to Boschendal Estate, as seen from inside the Estate*



*Figure 3 Orientation for Figure 4*



*Figure 4 Ou wapad within Boschendal Estate, facing toward site (1)*

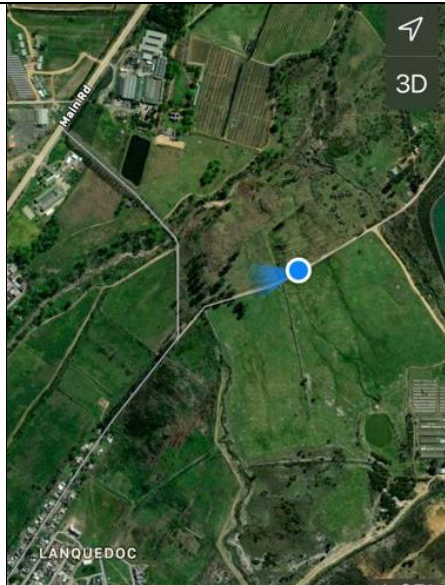


Figure 5 Orientation for Figure 6



Figure 6 Ou wapad within Boschendal Estate, facing toward Lanquedoc (1)

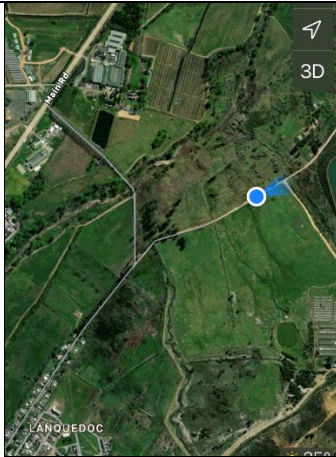


Figure 7 Orientation for Figure 8

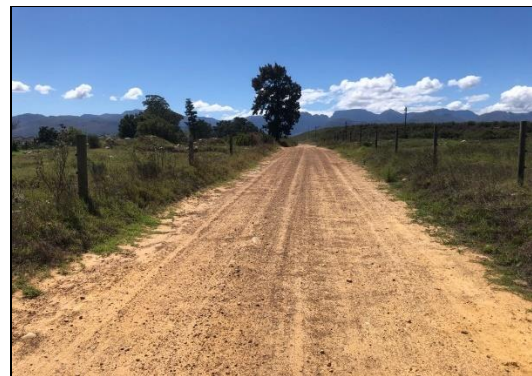


Figure 8 Ou wapad within Boschendal Estate, facing toward site (2)

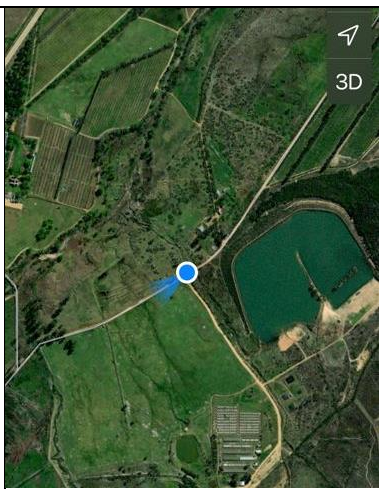
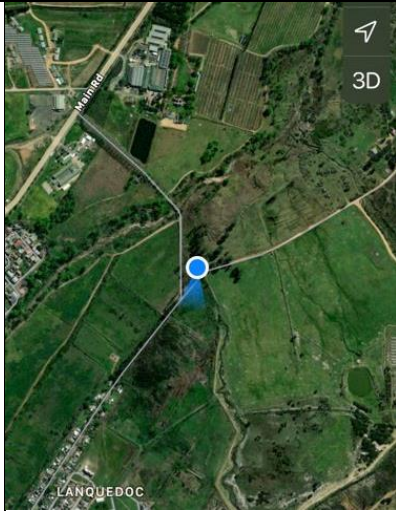


Figure 9 Orientation for Figure 10 and Figure 11





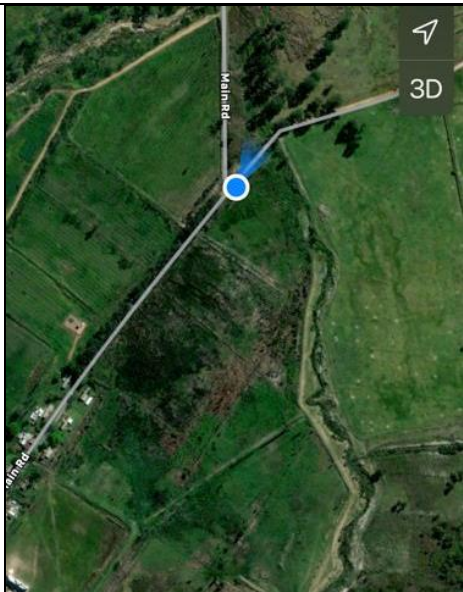
	<p data-bbox="770 197 1374 253"><i>Figure 10 T-junction near site where potable water line would start</i></p>  <p data-bbox="783 689 1358 745"><i>Figure 11 Wider view of T-junction near site where potable water line would start</i></p>
 <p data-bbox="296 1339 638 1366"><i>Figure 12 Orientation for Figure 13</i></p>	 <p data-bbox="772 1223 1370 1279"><i>Figure 13 Ou wapad within Boschendal Estate, facing toward Lanquedoc (2)</i></p>
<p data-bbox="205 1442 526 1469">Outside Boschendal Estate</p>	



*Figure 14 Orientation for Figure 15*



*Figure 15 Stream 11 crossing just outside Boschendal Estate*



*Figure 16 Orientation for Figure 17*



*Figure 17 Hoof Road, at Intersection, facing Boschendal Estate*



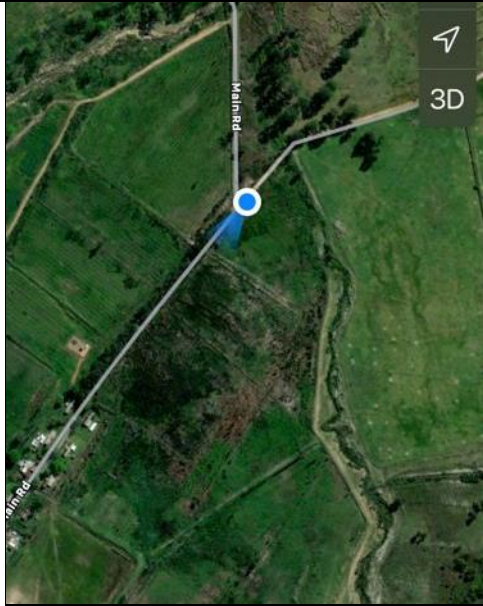


Figure 18 Orientation for Figure 19



Figure 19 Hoof Road, at Intersection, facing Lanquedoc, note row of gum trees and cleared, compacted dirt immediately adjacent to the right-hand side of the road

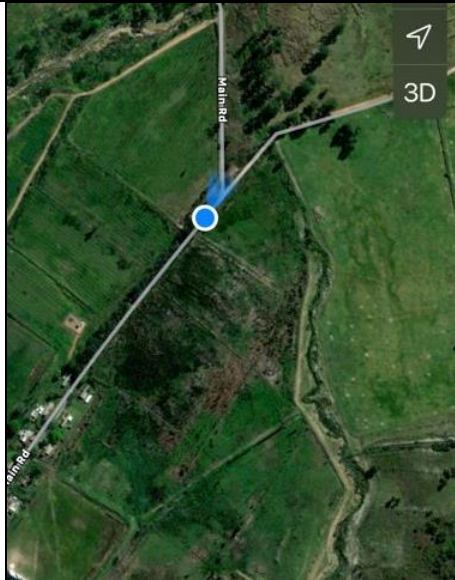
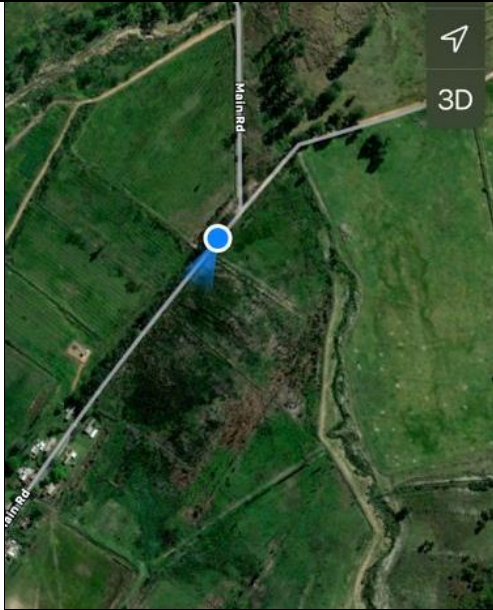


Figure 20 Orientation for Figure 21



Figure 21 Hoof Road, facing Boschendal Estate, note row of gum trees and cleared, compacted dirt immediately adjacent to the left-hand side of the image (1)



*Figure 22 Orientation for Figure 23*



*Figure 23 Hoof Road, facing Lanquedoc, note row of gum trees and cleared, compacted dirt immediately adjacent to the right-hand side of the image (1)*



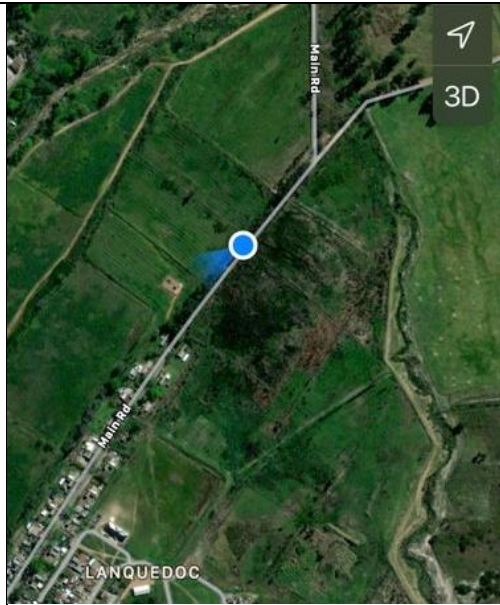


Figure 24 Orientation for Figure 25



Figure 25 Hoof Road, facing Lanquedoc, note row of gum trees and cleared, compacted dirt immediately adjacent to the right-hand side of the image (2)

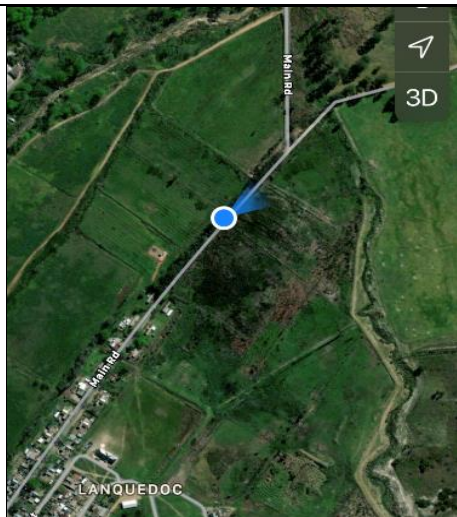


Figure 26 Orientation for Figure 27



Figure 27 Hoof Road, facing Boschendal Estate, note row of gum trees and cleared, compacted dirt immediately adjacent to the left-hand side of the image (2)

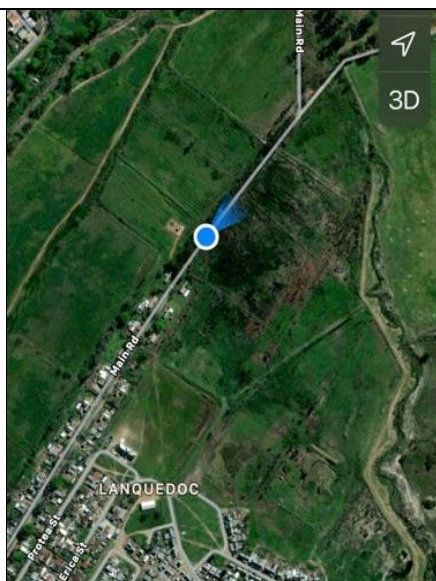


Figure 28 Orientation for Figure 29



Figure 29 Hoof Road, facing Boschendal Estate, note row of gum trees and cleared, compacted dirt immediately adjacent to the left-hand side of the image (3)

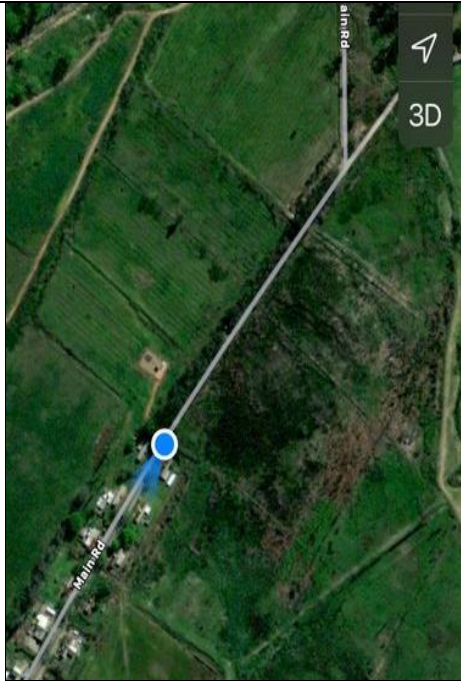


Figure 30 Orientation for Figure 31, Figure 32, Figure 33, Figure 34, Figure 35, Figure 36, Figure 37, Figure 38 and Figure 39



Figure 31 Hoof Road as it enters Lanquedoc, note the photo was taken on the entrance to the pump station



Figure 32 View of entrance to pump station, note that there is a stormwater channel that is crossed



Figure 33 Closer view of entrance to pump station, note that there is a stormwater channel that is crossed





*Figure 34 Stormwater channel alongside Hoof Road on the northern side of the road, adjacent to the houses*



*Figure 35 Stormwater channel alongside Hoof Road on the southern side of the road, adjacent to the houses*



*Figure 36 Closer view of culverts under the crossing to the pump station (1)*



*Figure 37 Closer view of culverts under the crossing to the pump station (2)*



*Figure 38 Road to the pump station*



*Figure 39 Road to the pump station with the pump station in the background*